

Francesca character head thimbles

There has been an increase in interest in collecting thimbles where the shape is predominant. None of these thimbles are being produced now. In 2009 it became apparent that there is a growing manufacture of head thimbles of pewter. This is now a separate topic

For completeness sake, I have included examples of all the head-shape thimbles known to me and these do not cover all figurals. These have come from various thimble catalogues of the time, which is always a good source, or from items that I have had for sale over the years. I presume Francesca pioneered this trend in thimbles? This study does not cover dolls or toys as thimbles

Francesca thimble character heads are the most prolific. According to Thimble Collectors' Guild in September 1985, Francesca were a small family firm in the heart of the Staffordshire potteries and known as Francesca Art China.

The company is no longer in existence. I believe that Francesca were taken over by Sutherland China, who used some of the Francesca moulds and destroyed the rest. Compare the Francesca head thimbles with the Sutherland China heads and you will notice the similarity in the shapes

Francesca began their range with handpainted figurines, the earliest I know of being August 1976, with the Francesca F + "Francesca Art China" which were signed and dated. The studio was based at 16 Sutherland Place in Longton, Stoke-on-Trent, England



backstamps for Francesca figurines

L: Sarah handpainted by John Price 1977 and the Sarah figurine – C: bell in shape of a lady backstamp by P Ansell 1987

R: S Jones 1980 and Francesca advertising plaque for their thimbles – and unknown figurine

As well as figurines, Francesca also produced signed handpainted bells and candle snuffers in the shape of figures.

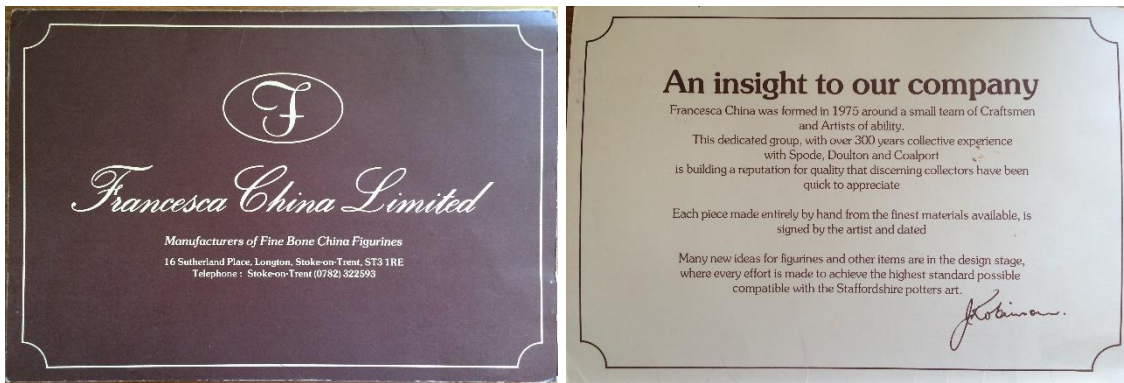


Francesca candle snuffers – Lancelot and Merlin with their Francesca backstamps



Francesca bell – Pope John Paul

Contact with one of the Francesca painters' sons in May 2014, Paul Shufflebotham, gives the founder of Francesca as **John Robinson**, who had had some sort of managerial role at Royal Doulton and surrounded himself with a small team of craftsmen and "Artists of Ability", from several of the potteries (Spode, Coalport as well as Royal Doulton). The first of these was Ray Shuff from Royal Doulton, who became a Francesca figurine painter until the liquidation of the figurines section in March 1981



front and back of introductory Francesca brochures with John Robinson's signature

Thimbles only made their appearance from 1982, after the initial liquidation. It is still to be established who took over Francesca from John Robinson for the period when Francesca produced handpainted thimbles



backstamps found on Francesca thimbles

L: painter's initial and date – R: Francesca F maker's mark and name of character head – thimble boxes

The thimbles have the Francesca backstamp (a cursive F in a circle) with 'Staffordshire England' and usually the painter's initials, with a two-digit date, all lettered on the inside as well as the name of the character

At least count, there are **116** different characters

The dates on their thimbles range from 1982 to 1990. From observation there seem to be some Francesca thimbles that are unsigned, or have the Francesca backstamp missing, or have no markings at all. They are obviously Francesca thimbles: could these be from the later end of the production, as some have an 89 date but no F maker's mark? They could be early "experiments"?

Each character has the indentations on the crown of the head, like traditional thimbles, but these are not always apparent as they are painted over. All the thimbles are handpainted and the finish is glossy, not matt. Being handpainted by a range of artists has led to colour variations and even variety in expressions. If you are a collector of Royal Doulton figurines, you will know the effect of a fine hand painter, as against an average one

You will also notice that there is an increasing appearance of unpainted, tho glazed, character heads - are these seconds or just unpainted stock - surely defeating the purpose of collecting these delightful handpainted range of thimbles? The other thought tho, is that seeing the plain white blank, makes us appreciate the fine handpainting of each character? Many do carry the Francesca backstamp

The following 31 painters' initials have been found in Francesca items, but only the painters in the later stages of the company painted thimbles (ie after 1982)

The dates alongside fourteen of these Francesca painters' names are the dates found lettered inside the thimbles. or dates Do your thimbles show any other initials? Most Francesca artists never painted thimbles

AD=Anthea Derry | **AE**=Alice Eckenstein | **AG** | **BB**=B Bream | **DB**=D Broom [83-84-87-88-89-91]
DS=Dan Smith? [84] | **GC**=G Czapski [85-89] | **GE** [unverified] | **IE** [unverified]
IS=Ivan Sutton [82-83-84-85-86] | **JK**=J Kelsall [or Kelshaw] [82-84-86] | **JL** [84-85-87-88-90]
JP=John Price | **JS**=Joan Sutton [82] | **KH**=Keith Harrison | **KS**=K Sylvester
KT=K Taylor [83-84-85-86-87-88-89-90] | **KY** [unverified] | **MB**=M Banks [90] | **MM**=Michael J Middling
MW=Minnie Webb | **MY**=M Young [88-89-90] | **NE**=N Evans [82] | **PA**=Pat Ansell [81-82-83-84-85-86]
PN | **RB**=Robert Band | **RH**=Ron Hearson
RS=Ray Shufflebotham [signs R Shuff] he was apprenticed to Spode in 1950 and was one of the first figurine painters to join Francesca after he left Royal Doulton; also painted candle snuffers | **SF**
SJ =Stan Jones [82-83-84] | **TK**=T Kelshaw [82-83-86]

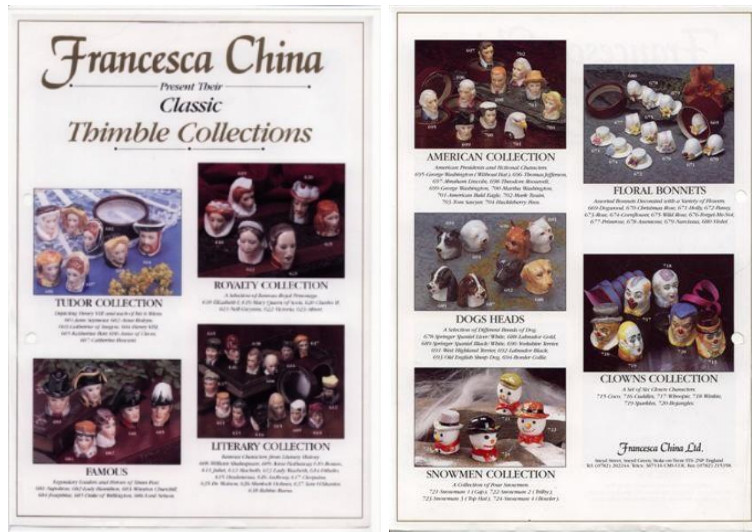


Francesca artists at work



Francesca backstamped, tiny character jugs, candle snuffers and busts were also produced. these are included for completeness to show these non-thimble shapes - they are the Francesca tiny - not mini - character jugs

I am happy to have been sent digital copies of the original pamphlet advertising Francesca thimbles. Although the pamphlets appear to be undated, it is interesting to note the 'subject' groupings used by Francesca, which I have tried to follow, including the group names. I have added the brochures below - the lettering is almost impossible to read but the groupings can be clearly seen



I have divided the Francesca thimbles by the various character groups (as named in the original Francesca brochure) and then alphabetised them. Where possible I have included the name of the Dickensian story that they relate to

American Collection

there are ten characters in this set



US Presidents



Abraham Lincoln
+ part-painted version



American Bald Eagle
R: KT88



George Washington
without a hat
formed part of original set



George Washington
with a hat + gold-painted crown of hat formed part of original set
2nd: KT84



Huckleberry Finn



Liberty
did not form part of original brochure's set of 10
with brass headdress



Mark Twain
C: GC89



Martha Washington



Theodore Roosevelt
C: KT84



Thomas Jefferson
C: KT - R: MY90
hand-lettered character's name



Tom Sawyer
with a hat



Tom Sawyer
without a hat

Clowns Collection

set of six

the clowns are only named on the boxes and not in the thimbles – tho some are!!
an identical example of the clown "Cuddles" has been found - painted in 1986 - that is named "Beppo" within the thimble

the numbering alongside the names refers to the Francesca catalogue numbers

a very observant Francesca collector has noticed that the clown shapes correspond to the Dickensian character shapes. What do you think? I think it shows how artistic and inventive the Francesca painters were!!

look at "Cuddles" and "Artful Dodger" - "Whoopie" and "Mr Dick" - "Winkie" and "Tommy Traddles" - "Coco" and "Bill Sykes" - "Bojangles" and "Uriah Heep" - "Sparkles" and "Mr Micawber"



Bojangles (720)

C: KT89

hand-lettered character's name



Coco (715)

L: KT89



Cuddles (716)

+ KT89 + MB90

hand-lettered character's name



Sparkles (719)

R: MY89



Whoopie (717)

R: KT89



Winkie (718)
C: KT88 - R: MY89

Composers



Bach



Beethoven



Mozart
IS85



Schubert
R: varieties in gloss & matt

Dickens Collection

originally, I thought this was a set of 29
on closer inspection of the Francesca brochure
Charles Dickens is not part of the Literary Collection
he must then complete this set of 30?



Charles Dickens



Artful Dodger
[-- Oliver Twist --]



Bill Sykes
[-- Oliver Twist --]



Bullseye
 [-- Oliver Twist --]
 hand-lettered character's name



David Copperfield
 [-- David Copperfield --]



Estella
 [-- Great Expectations --]



Fagin
 [-- Great Expectations --]



Little Dorrit
 [-- Little Dorrit --]



Little Emily
 [-- David Copperfield --]



Little Nell
 [-- The Old Curiosity Shop --]
 R: MY88



Magwitch
 [-- Great Expectations --]



Miss Haversham
 [-- Great Expectations --]



Mr Bumble

[-- Great Expectations --]



Mr Dick

[-- David Copperfield --]



Mr Micawber

[-- David Copperfield --]



Mr Pickwick

[-- The Pickwick Papers --]



Mrs Squeers

[-- Nicholas Nickleby --]



Nancy

[-- Oliver Twist --]

C: PA83



Nicholas Nickleby

[-- Nicholas Nickleby --]



Oliver Twist

[-- Oliver Twist --]



Pecksniff

[-- Martin Chuzzlewick --]



Pip

[-- Great Expectations --]



Sairey Gamp
 [-- Martin Chuzzlewick --]
 R: PA83



Scrooge
 [-- A Christmas Carol --]



Sergeant Bux Fux
 [-- The Pickwick Papers --]



Smike
 [-- Nicholas Nickleby --]

lower: a very crude amateurish modern attempt (2019) – never painted by original Francesca painters



Tiny Tim
 [-- A Christmas Carol --]



Tommy Traddles
 [-- David Copperfield --]



Uriah Heep
 [-- David Copperfield --]



Wackford Squeers
 [-- Nicholas Nickleby --]

Dogs Heads

there are eight dogs in this set
some were offered for sale by The Thimble Guild in Scotland
the dogs' eyes are so realistic – for matt-finish dogs – see Victoria China



Border Collie

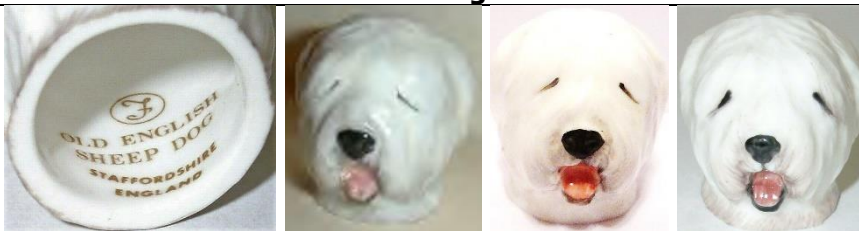


Labrador – black

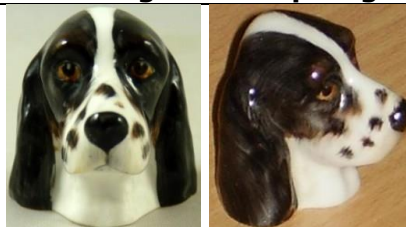
hand-lettered character's name



Labrador - golden



Old English Sheep Dog



Springer Spaniel - black



Springer Spaniel - liver



West Highland Terrier
hand-lettered character's name



Yorkshire Terrier

Famous

according to the original Francesca brochure
this was originally a set of six leaders and heroes



Drake
MY88

this thimble did not form part of the original brochure's set of 6 thimbles



Duke of Wellington



Josephine



Lady Hamilton
3rd: DB89



Lord Nelson
with a hat

hat version is featured in the original brochure
R: KT85



Lord Nelson
without a hat



Napoleon
with a hat

hat version is featured in the original brochure



Napoleon
without a hat
R: PA82



Sir Walter Raleigh

this thimble did not form part of the original
brochure's set of 6 thimbles



Winston Churchill
without a hat



Winston Churchill
with a hat

hat version is featured in the original brochure

Floral bonnets

this is a set of twelve thimbles with four differently shaped hats - two types of bonnet, brimmed hat, cloche. Each has a flower attached but the flower is not named inside the thimble there are identical thimbles that are also named for the months of the year The month is lettered inside the thimble

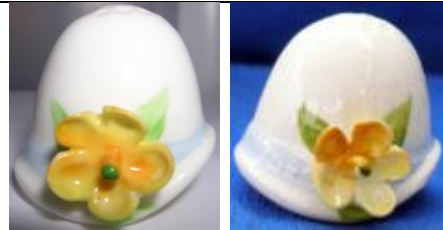
first offered for sale thru Thimble Collectors' Guild in Scotland, in July 1985



month backstamp



Anemone
aka February
JL89



Christmas rose
aka November
+ JL89



Cornflower
aka June
JL89



Dogwood
aka October
+ JL89



Forget-me-nots
aka August
JL89



Holly
aka December



Narcissus
aka January
JL89



Pansy
aka May
+ JL89



Primrose
aka July
JL89



Rose
aka April



Violet
aka March
JL89



White – still needs a flower applied



Wild rose
aka September
+ JL89



Literary Characters

set of 14

some are authors - some from fiction

many of these thimbles are **pairs** (with consecutive numberings)

the numbering alongside some of the names refers to the Francesca catalogue numbers



Anne Hathaway (609)



Antony (616)

R: hand-lettered character wrongly name "Anthony"



Cleopatra (617)



Desdemona (615)



Dr Watson



Juliet (611)

C: PA83



Lady Macbeth (613)



Macbeth (612)



Othello (614)



Robbie Burns

R: KT84



Romeo (610)

4th: PA83



Sherlock Holmes



Tam O'Shanter

R: KT84



William Shakespeare (608)

2nd L: 83-dated thimbles show the indentations starting at the hairline

R: DB91

Royalty Collection

originally a set of six
 a selection of European royal personages
 the numbering alongside the names refers to the Francesca catalogue numbers



Albert (623)



Charles II (620)

with a hat

hat version is featured in the original brochure



Charles II
 without a hat
 R: DB83



Earl of Essex

this thimble did not form part of the original
 brochure's set of 6 thimbles



Elizabeth I (618)
 C: IS84



Mary Queen of Scots (619)
 hand-lettered character's name



Nell Gwynn (621)



Victoria (622)

Snowmen

a set of four
all have a sprig of greenery on the hat



Bowler
C: MY90



Hat
R: MY89



Top hat



Trilby

Tudor Collection



Anne Boleyn (602)



Anne of Cleves (606)



Catherine Howard (607)



Catherine of Aragon (603)



Jane Seymour (601)



Katherine Parr (605)

Others



Baby Bunting - blue



Baby Bunting - pink



**Baby Bunting – blue
in crib
crib forms a pin-tray**



**Baby Bunting – pink
in crib
crib forms a pin-tray**



Good King Wenceslas

Bottom L: DB87



John Paul II

L: IS86 - R: IS82

Contributors

John Alexander | Joanna Blackie-Sew Many Bits | Yolanta Bogdziewicz | D P Botha | Pawel Brzyski | Sue Burt
 Ruth C | Sue Christensen | Ann Cooke | Nancy Curitti | Joy Carlsen Earles | Craig Eisenbrown | Caroline Fisher
 Sharon Flynn | Debra Green | Bill Griffin | Fay Griffiths | Jean Wilson Hale | Dale Harmer | John Harris
 Helen Harrison | Philippa Harrison | Karen Hay | Kari Hayes | Linda Heggs | Barry Hendry
 Gordon Henry (founder of Harlequin Design Studio) | Alan Highfield | Bradley Hodge | Ann Holme | Cathy Howgate
 Alison Innerdale | Denise Jenkins-Welsh Thimblers | Gladys Junge | Pat Keller | Kim Nicola Kissane | Shelly Lebowitz
 Margaret and Derek Lickfold | Doreen Lilley-Pricklepin | Lin | Val Lucas | Neil MacDonald | Tom Marino
 Melanie Martin | Don Matthews | Danny Milner | Paul Morris | Joyce Nixon-Smith | Maurice O'Reilly | Mandy Page
 Chloe Payne | Moyra Peckston | Wayne Perkins | Kate Power | Wanda Ralston-Boulder Bay | Sue Roberts
 Jean Rose-Miss Mouse | Estelle Rosen | Pat Rutter | Linda Samaripa | Norma Shattock | Marina Shcherbatyuk
 Bob Shepley | Barbara Shufflebotham | Paul Shufflebotham | Edna Skarratt | Jean Taylor | Rosalie Webb |
 Mave Wiskin | Krystyna Zagajewska | Joanne Zicari

This listing of Francesca character head thimbles does not purport to be complete or accurate in all aspects.
 Rather it invites comment and contribution to add to our knowledge. My thanks to the contributors.

EMAIL thimbleselect@bigpond.com TO SHARE YOUR KNOWLEDGE.

© Sue Gowan
 September 2002